



ABHILASH
CONSTRUCTIONS

Beautiful Yet Affordable





Yaksha

HOMES



Yaksha
HOMES

COMPANY PROFILE

The Foundation of ABHILASH SYNERGETIC CONSTRUCTIONS & EXPORTS PVT. LTD. extends back to 1987, to the vision and dedication of its founder Sri. P. Anand Kumar (C.M.D.) a pioneer who is totally committed to quality, both in terms of product as well as service. We have a vast experience of 13.11 lakh sq.ft. Built up space and have created over 1544 happy customers.

Abhilash Synergetic Construction and Exports Pvt. Ltd. occupies place of pride among the top builders in the city of Visakhapatnam. We are pioneers in setting standards in developing properties with visualisation of future developments. Our mini township "ANAND NAGAR" in P.M.Palem was the first project in the suburbs with future visualisation of IT & Infrastructure developments way back in the year 2002 which set path for such kind of developments at Madhurwada.

Our strengths we believe lies in our well-planned project management and our long experience in the building industry. Experience that's hard to match - 30 years of adaptation to a variety of challenges including tight deadlines, pressures on space, exacting building laws and specifications, technological developments and evolving customer requirements.

We have succeeded in putting our client's interests first on each and every project and have left no stone unturned in living up to our reputation, of delivering more than the promised and on time. As a part of construction activity, Abhilash Constructions conducts seminars and advertises about creating the vision and awareness about the growth of Vizag.

Why should you own a flat in BOYAPALEM?

We at Abhilash Constructions believe that "Beautiful can be Affordable". We proudly claim to have set a trend by constructing the first projects in areas like Kirlampudi Layout, Maharanipecta, CBM Compound, Akkayyapalem, Madhurawada, which now developed to become the prime residential localities of Vizag and supported 1544 happy customers to own a home at an affordable price.

Now we visualise Boyapalem as the next hotspot of Vizag looking at the upcoming developments around that area.

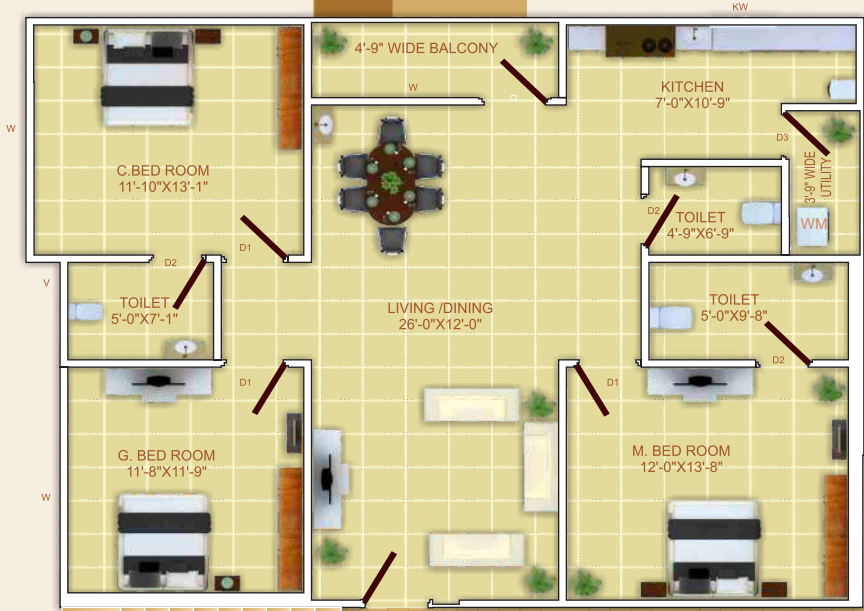
Upcoming developments at Boyapalem:

- Gambeeram IT SEZ - 20.70 Hec.
- Gambeeram APIIC
- Top Educational Institutions like IIM-Vizag, etc.
- SAMEER (Society for applied Microwave Electronics Engineering And Research) 13 acres allotted. 25000 employees in coming 3 years.



Yaksha
HOMES

FLAT 2
1509 sft.



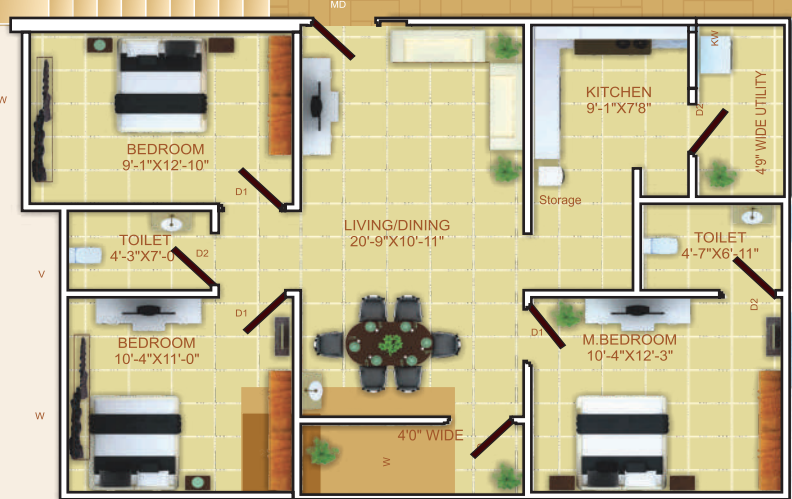
FLAT 3
1456 sft.



8' Wide Corridor

6'9" Wide Corridor

FLAT 1
1159 sft.



FLAT 4
1102 sft.



Note : All the flat sizes (Sfts) mentioned are including common areas.

Common areas of all the flats are proportionately distributed to each flat

Existing 40' Road
Master Plan Proposed 100' Wide Road

2 1509 sft.



3 1456 sft.



1 1159 sft.



4 1102 sft.



Exclusive Specifications



2x2 Vitrified Tiles



Putty finished interior walls with plastic emulsion paint



Finolex or equalent wiring



Teak wood entrance door & frame



UPVC Windows



Flush shutter interior doors



7 feet height dado work in toilets



5 years warranted CP & Porcelain material



All European toilets unless preferred otherwise



Superior Quality PVC pipelines



Kitchen with black granite platform along with 2ft dado work



Bore Wells



Backup Generator facility for common lighting, motor & lifts (1 light & 1 Fan each for all flats)



Lifts



24x7 CCTV Security System for all floors

Mode of Payment

Towards Booking **Rs. 3,00,000/-**

Towards undivided share of land registration **25% Flat Cost**

Towards foundation **15% Flat Cost**

Towards slab **20% Flat Cost**

(To be paid by every flat owner on completion of foundation on ground level, irrespective of the floor)

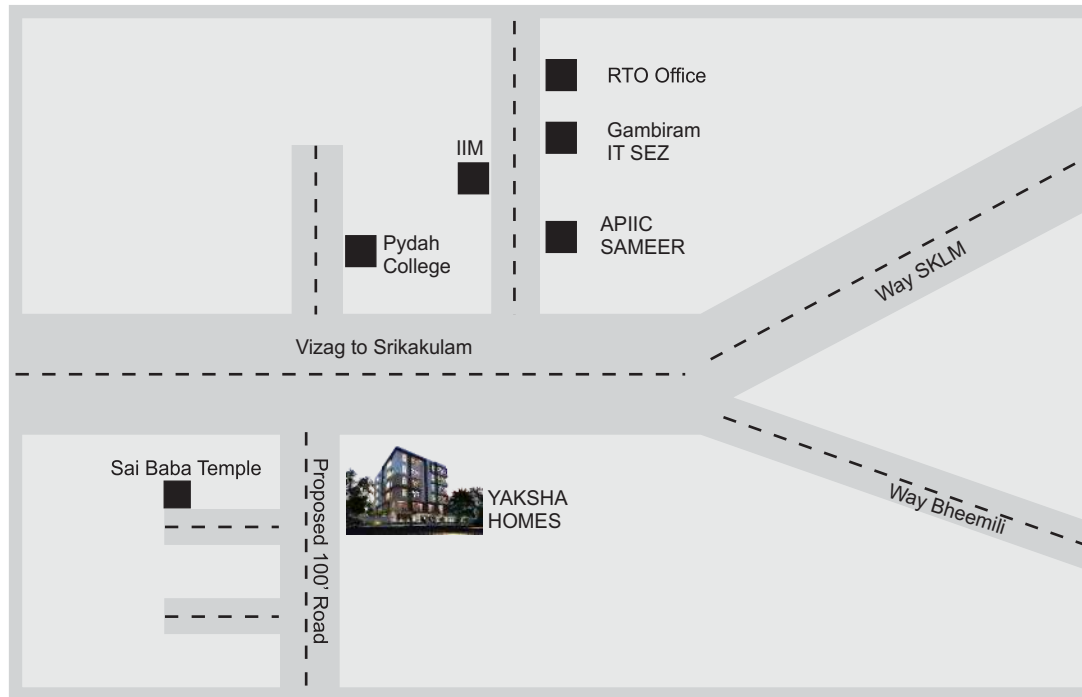
Towards Brick work **15% Flat Cost**

(Once your portion slab is completed)

Towards plastering **15% Flat Cost**

(Once your portion brick work is completed)

Balance amount towards completion of the flat
(Flats will be handed over within two months after receiving the final installment).



#9-29-14, 1st Floor, Balaji Nagar, Siripuram, Visakhapatnam-530 003
Ph : 0891-2727445, 9885488671, 9703496699, Web : www.abhilashconstructions.net